

**STANDARD ARRIVAL CHART  
INSTRUMENT(STAR) - ICAO**

TRANSITION ALT 14 000  
TRANSITION LVL FL 140

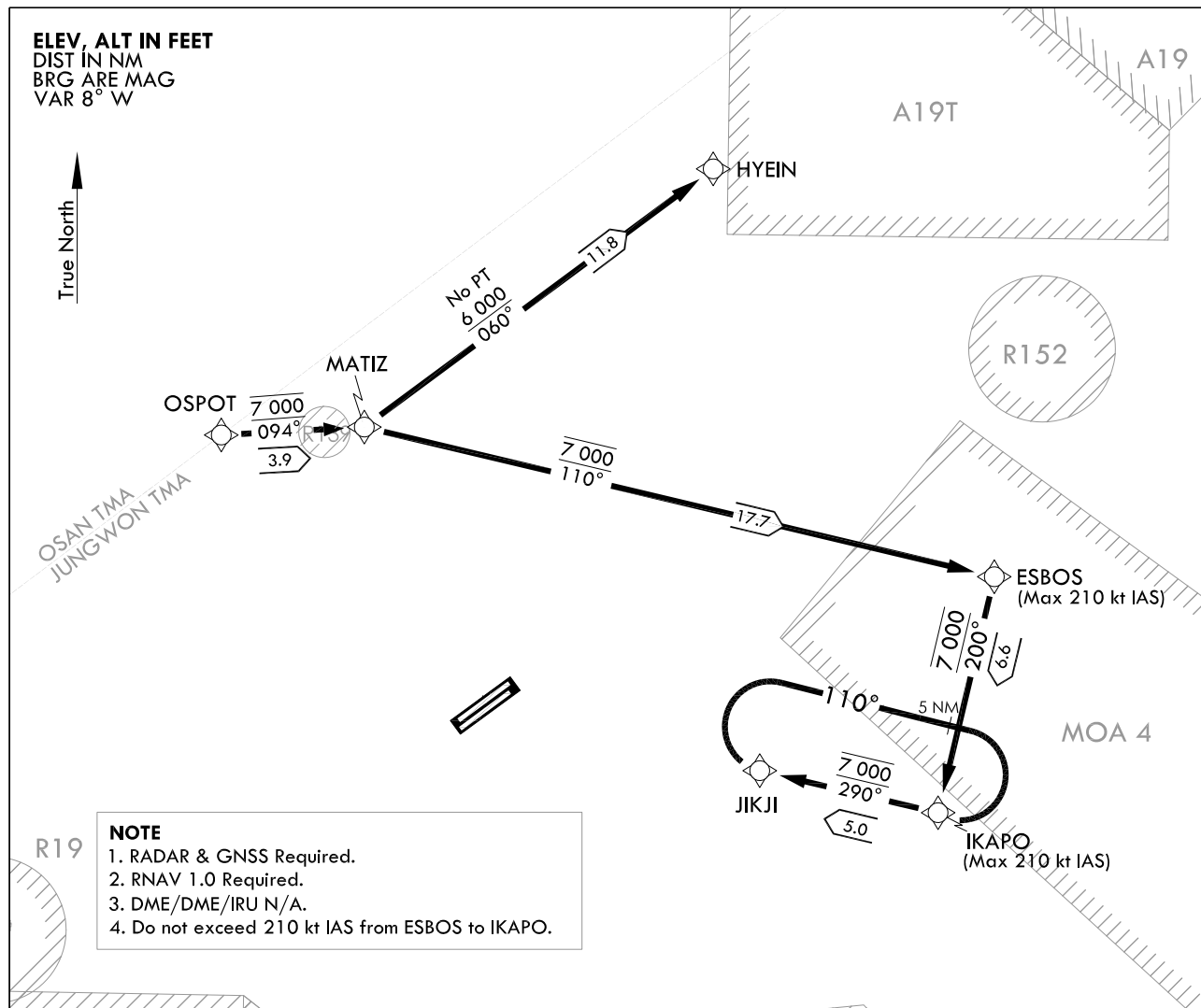
JUNGWON APP 134.0 134.1  
134.4  
CHEONGJU TWR 118.7 126.2

**CHEONGJU/Cheongju INTL(RKTU)**

**RWY 06L/24R**

**MATIZ 1**

Note : Arrival under U.S. TERPS.



**ARRIVAL ROUTE DESCRIPTION**

From OSPOT on track 094° to cross MATIZ at 7 000 ft.

Landing RWY 06L : From MATIZ on track 110° to cross ESBOS at 7 000 ft and on track 200° to cross IKAPO at 7 000 ft and on track 290° to cross JIKJI at 7 400 ft and expect RNAV approach.

Landing RWY 24R : From MATIZ on track 060° to cross HYEIN at 7 000 ft and expect RNAV approach.

Change : Information of fix names(GARZA → ESBOS and NOSON → IKAPO).

CHEONGJU/Cheongju INTL(RKTU)

RWY 06L/24R

MATIZ 1

## AERONAUTICAL DATA TABULATION

## Standard Instrument Arrival Procedure Coding Tables

## MATIZ 1 RWY 06L

Serial Number	Path Descriptor	Waypoint Identifier	Fly-over	Course/Track °M(°T)	Distance (NM)	Turn direction	Altitude (ft)	Speed (kt)	Coordinates	VPA/TCH	Navigation specification	Remarks
001	TF	OSPOT	-	-	-	-	@7 000	-	36°50'18.1"N 127°20'54.9"E	-	RNAV 1	-
002	TF	MATIZ	-	094(085.9)	3.9	-	@7 000	-	36°50'34.9"N 127°25'46.1"E	-	RNAV 1	-
003	TF	ESBOS	-	110(102.4)	17.66	-	@7 000	-210	36°46'44.7"N 127°47'14.2"E	-	RNAV 1	-
004	TF	IKAPO	-	200(192.6)	6.6	-	@7 000	-210	36°40'16.6"N 127°45'26.2"E	-	RNAV 1	-
004	TF	JKIJI	-	290(282.5)	5.0	-	@7 000	-	36°41'21.7"N 127°39'22.1"E	-	RNAV 1	IAF

## MATIZ 1 RWY 24R

Serial Number	Path Descriptor	Waypoint Identifier	Fly-over	Course/Track °M(°T)	Distance (NM)	Turn direction	Altitude (ft)	Speed (kt)	Coordinates	VPA/TCH	Navigation specification	Remarks
001	TF	OSPOT	-	-	-	-	@7 000	-	36°50'18.1"N 127°20'54.9"E	-	RNAV 1	-
002	TF	MATIZ	-	094(085.9)	3.9	-	@7 000	-	36°50'34.9"N 127°25'46.1"E	-	RNAV 1	-
003	TF	HYEIN	-	060(052.53)	11.84	-	+6 000	-	36°57'47.1"N 127°37'29.7"E	-	RNAV 1	IAF

## HOLDING PROCEDURE

Holding Identification	Path Descriptor	Waypoint Identifier	Fly-over	Course/Track °M(°T)	Time (min)	Turn direction	Altitude (ft)	Speed (kt)	Coordinates	VPA/TCH	Navigation specification	Remarks
MATIZ 1	TF	JKIJI	-	290(282.5)	-	R	7 000	230	36°41'21.7"N 127°39'22.1"E	-	-	Hold at JIKJI E Right Turn 290° Inbound 5 NM Leg

Change : Information of fix names(GARZA → ESBOS and NOSON → IKAPO).